

# PALM BEACH PARK OF COMMERCE, P.I.P.D. - PLAT 28

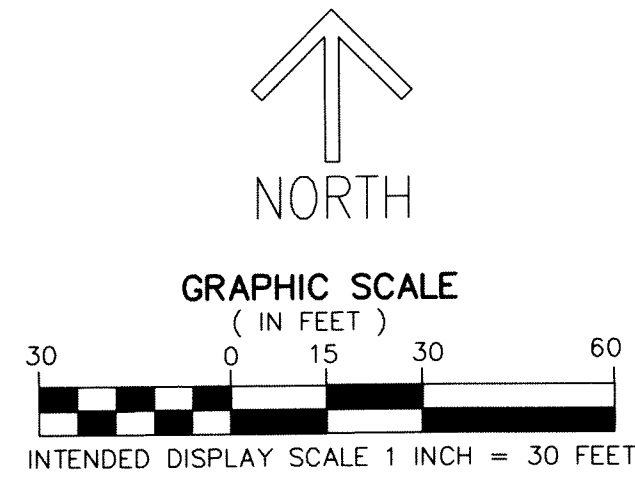
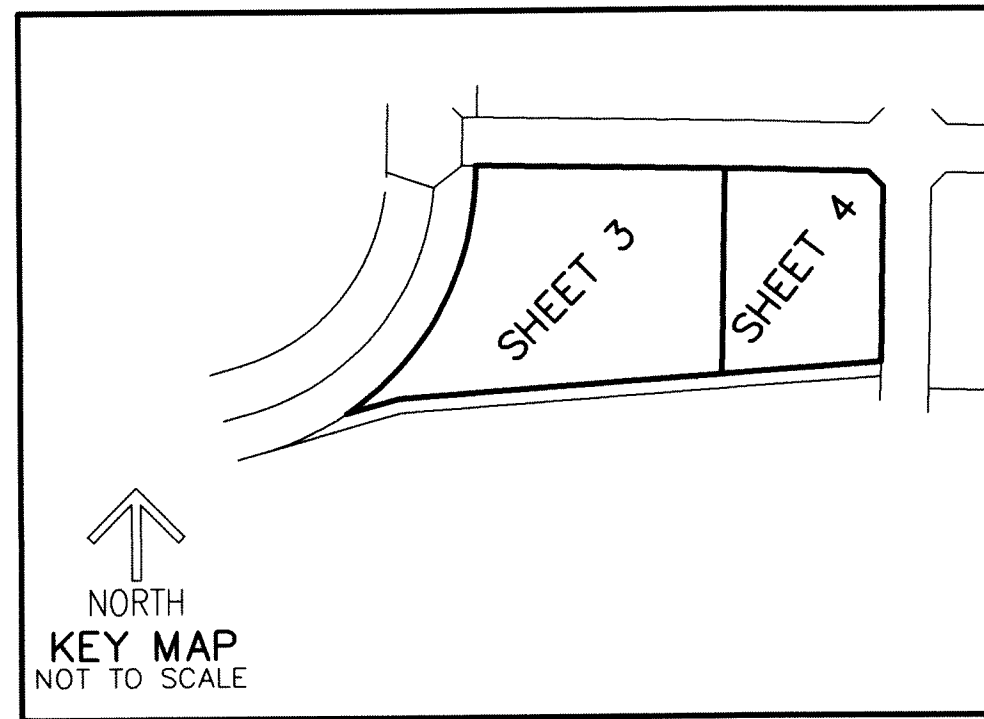
BEING A REPLAT OF LOT 7L, PALM BEACH PARK OF COMMERCE, P.I.P.D. - PLAT 14,  
ACCORDING TO THE PLAT THEREOF AS RECORDED IN PLAT BOOK 112, PAGE 65,  
PUBLIC RECORDS OF PALM BEACH COUNTY, FLORIDA,  
LYING IN SECTION 18, TOWNSHIP 41 SOUTH RANGE 41 EAST, PALM BEACH COUNTY, FLORIDA

THIS INSTRUMENT PREPARED BY  
DAVID P. LINDLEY  
OF  
**CAULFIELD and WHEELER, INC.**  
SURVEYORS - ENGINEERS - PLANNERS  
7900 GLADES ROAD, SUITE 100  
BOCA RATON, FLORIDA 33434 - (561)392-1991

PARCEL 1A  
PALM BEACH PARK OF  
COMMERCE P.I.P.D. - PLAT 13 REPLAT  
(PLAT BOOK 127, PAGE 137-139)

CORPORATE ROAD SOUTH  
80' PUBLIC RIGHT-OF-WAY  
(PLAT BOOK 56, PAGE 172)

30  
**SHEET 3 OF 4**

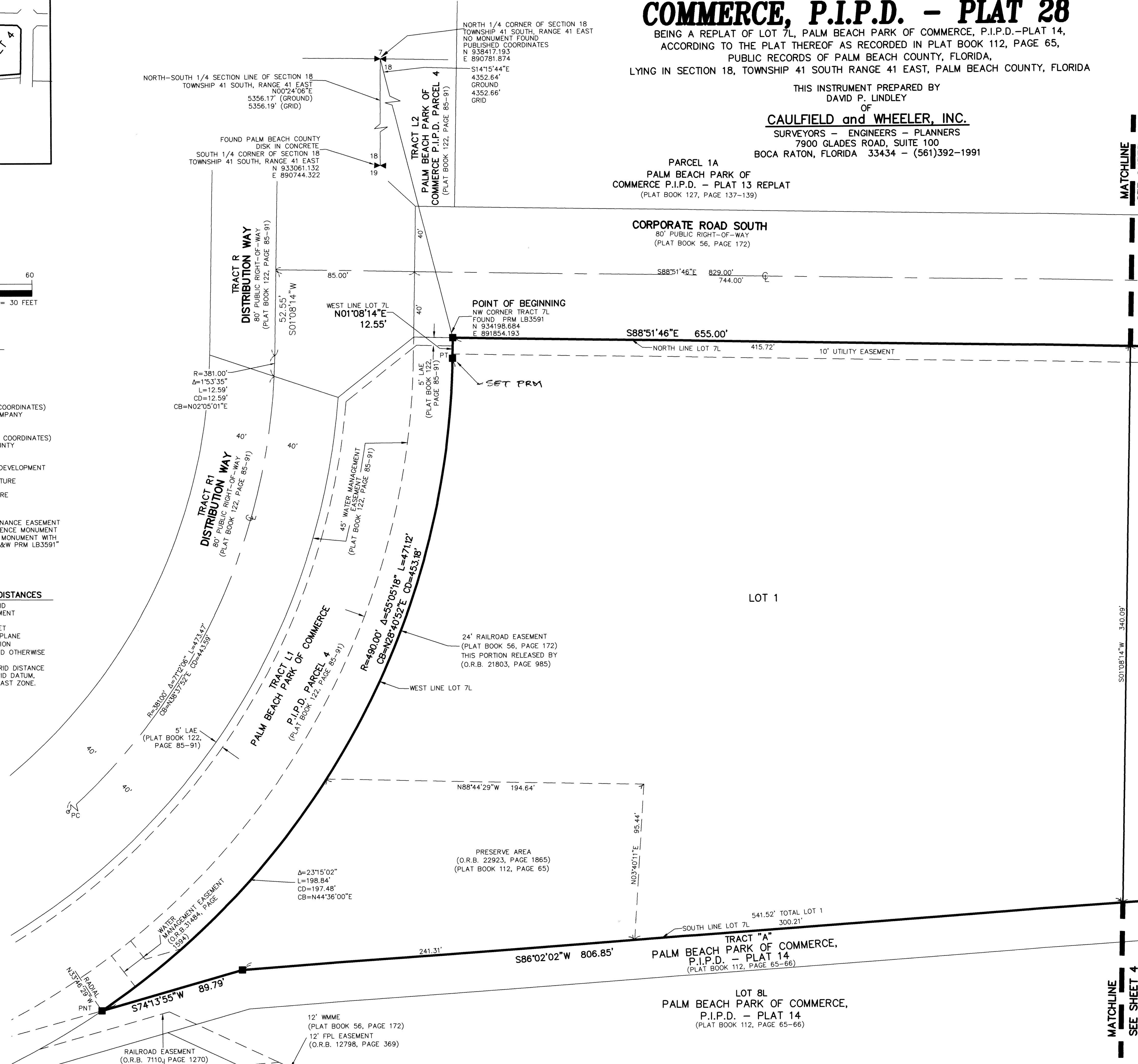


**LEGEND/ABBREVIATIONS**

- CL - CENTERLINE
- Δ - DELTA (CENTRAL ANGLE)
- ANP - AFFECTS NOT PLOTTED
- AC - ACRES
- CB - CHORD BEARING
- CD - CHORD DISTANCE
- DNA - DOES NOT AFFECT
- E - EASTING (WHEN USED WITH COORDINATES)
- FPL - FLORIDA POWER & LIGHT COMPANY
- L - ARC LENGTH
- LB - LICENSED BUSINESS
- N - NORTHING (WHEN USED WITH COORDINATES)
- NPBCID - NORTHERN PALM BEACH COUNTY IMPROVEMENT DISTRICT
- O.R.B. - OFFICIAL RECORD BOOK
- P.I.P.D. - PLANNED INDUSTRIAL PARK DEVELOPMENT
- PC - POINT OF CURVATURE
- PCC - POINT OF COMPOUND CURVATURE
- PNT - POINT OF NON-TANGENCY
- PRC - POINT OF REVERSE CURVATURE
- PT - POINT OF TANGENCY
- R - RADIUS
- SF - SQUARE FEET
- WMME - WATER MANAGEMENT MAINTENANCE EASEMENT
- PRM - DENOTES PERMANENT REFERENCE MONUMENT SET 4" x 4" x 24" CONCRETE MONUMENT WITH ALUMINUM DISK STAMPED "C&W PRM LB3591" UNLESS OTHERWISE NOTED

**NOTES  
COORDINATES, BEARINGS AND DISTANCES**

COORDINATES SHOWN ARE GRID  
DATUM = NAD 83 1990 ADJUSTMENT  
ZONE = FLORIDA EAST  
LINEAR UNIT = US SURVEY FEET  
COORDINATE SYSTEM 1983 STATE PLANE  
TRANSVERSE MERCATOR PROJECTION  
ALL DISTANCES ARE GROUND, UNLESS NOTED OTHERWISE  
SCALE FACTOR = 1.000005579  
GROUND DISTANCE X SCALE FACTOR = GRID DISTANCE  
BEARINGS AS SHOWN HEREON ARE GRID DATUM,  
NAD 83 1990 ADJUSTMENT, FLORIDA EAST ZONE.



MATCHLINE  
SEE SHEET 4

MATCHLINE  
SEE SHEET 4